

Implementing Community Measurement

Results and Rough Spots from Kenya



Community Measurement enables Real Outcome Measurement

- Time and frequency as
 - Budget necessity
 - Variables
 - Motivators
- Secondary indicators
- Community interpretations of indicators

Speak for the Child

Comprehensive Services and Support



- Areas:

- Health
- Nutrition
- Psychosocial issues
- Education
- Livelihood support
- Child protection
- HIV prevention and treatment
- Integrated services

- Approaches

- Knowledge transfer
- Practical help: Goods, grants, vouchers, fees, transport
- Individual and group support

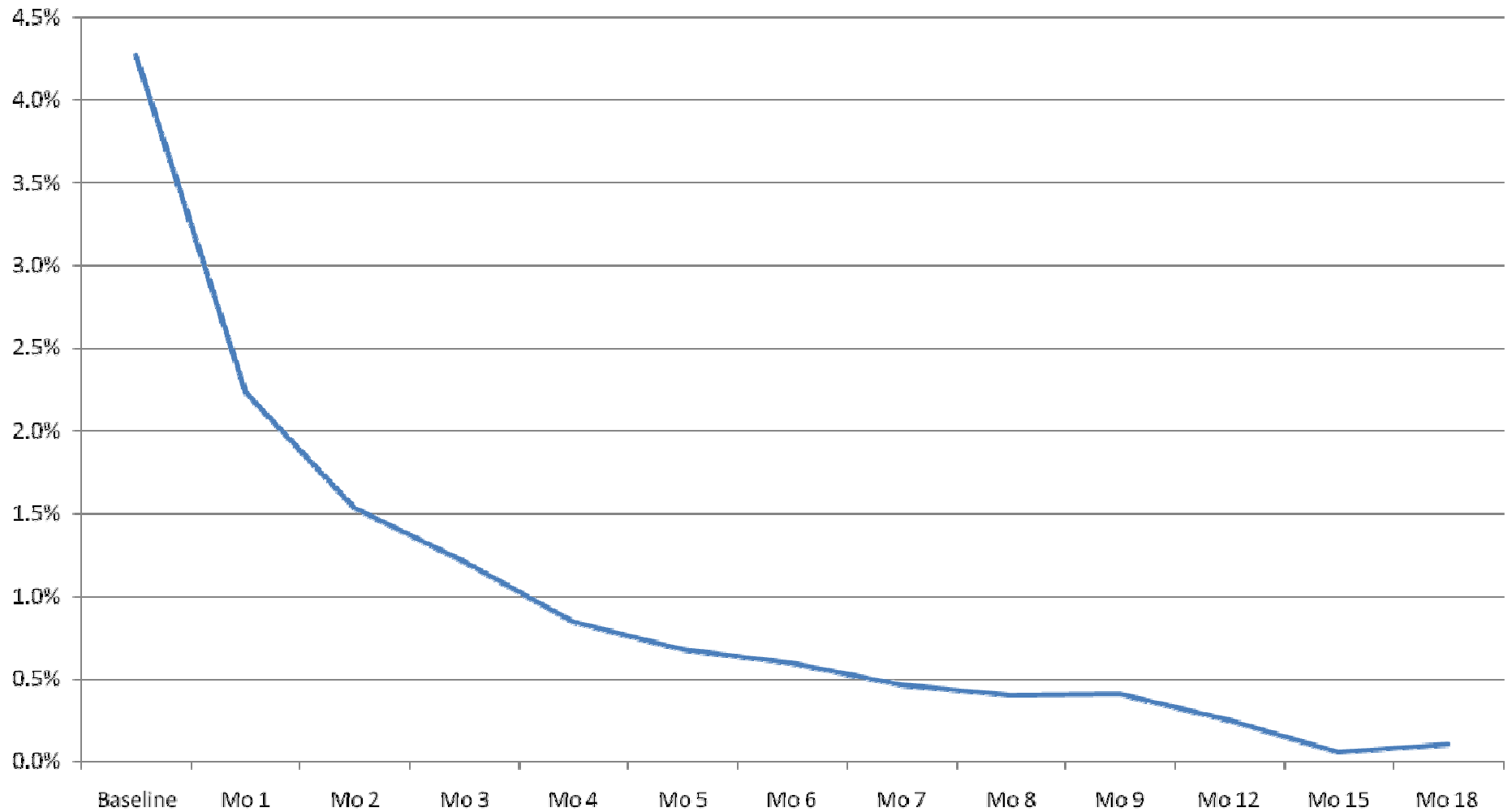
Village-based “Mentors”

Recruited from community per village/20 HHs

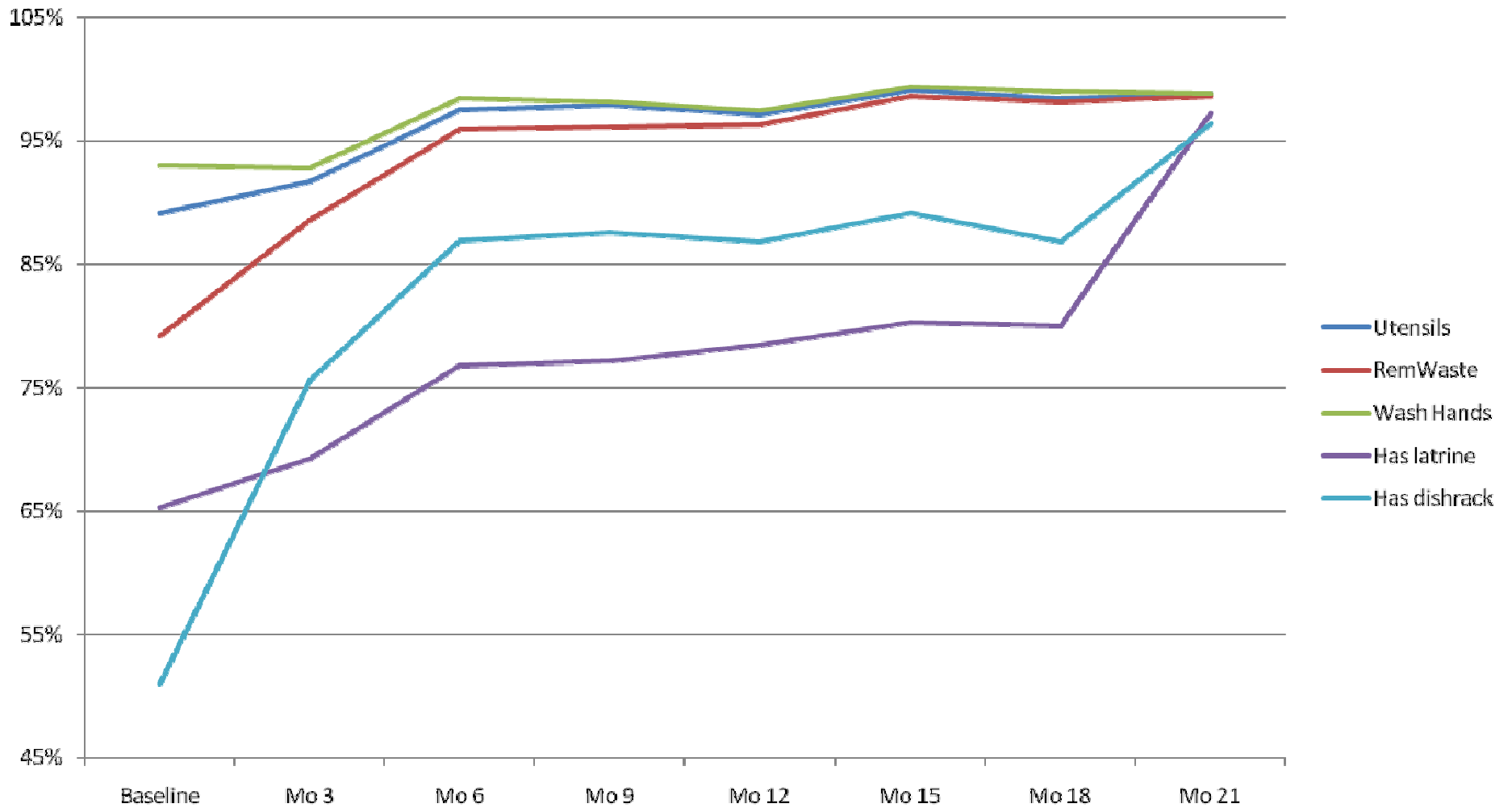
- Knowledge transfer
 - 12 Trainings
 - 3 HH visits/month
- Practical help
 - Commodity distributions
 - Clinic/pharmacy voucher
 - Preschool fees
- Individual and Group support
 - Immediate and personal
 - Develop Support groups
- Record baseline & monthly data



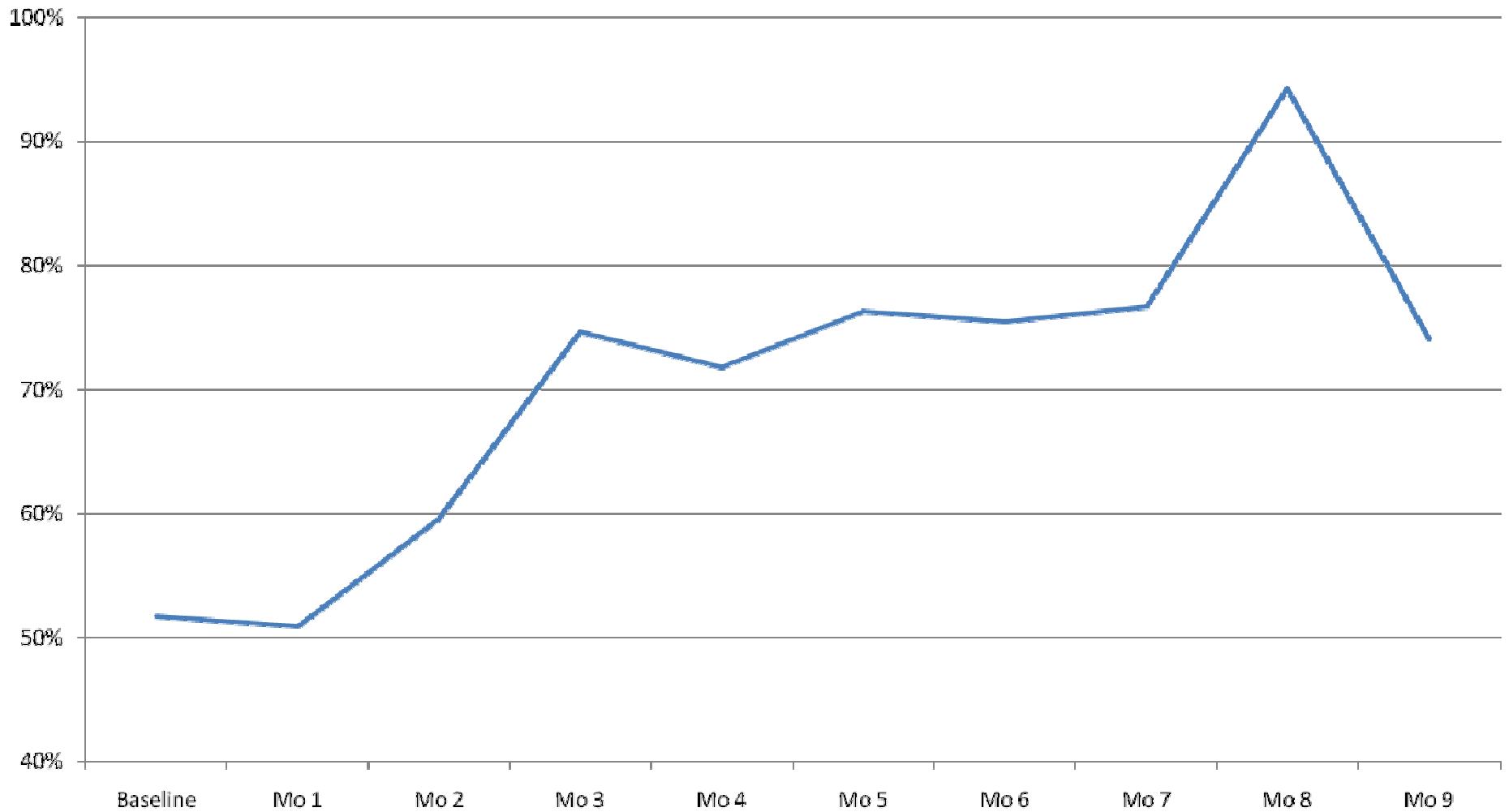
Frequent Diarrhea



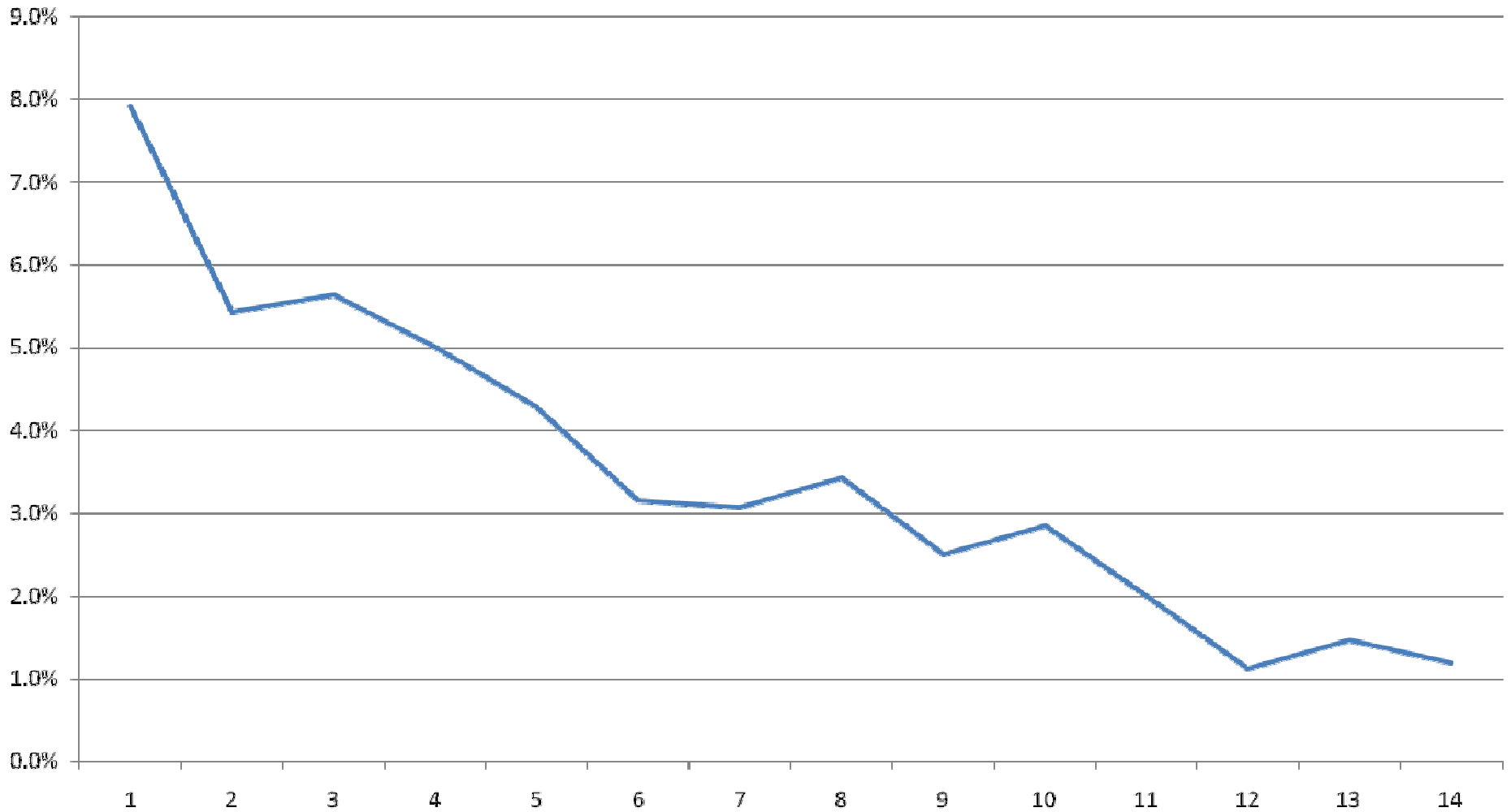
Household Hygiene Change



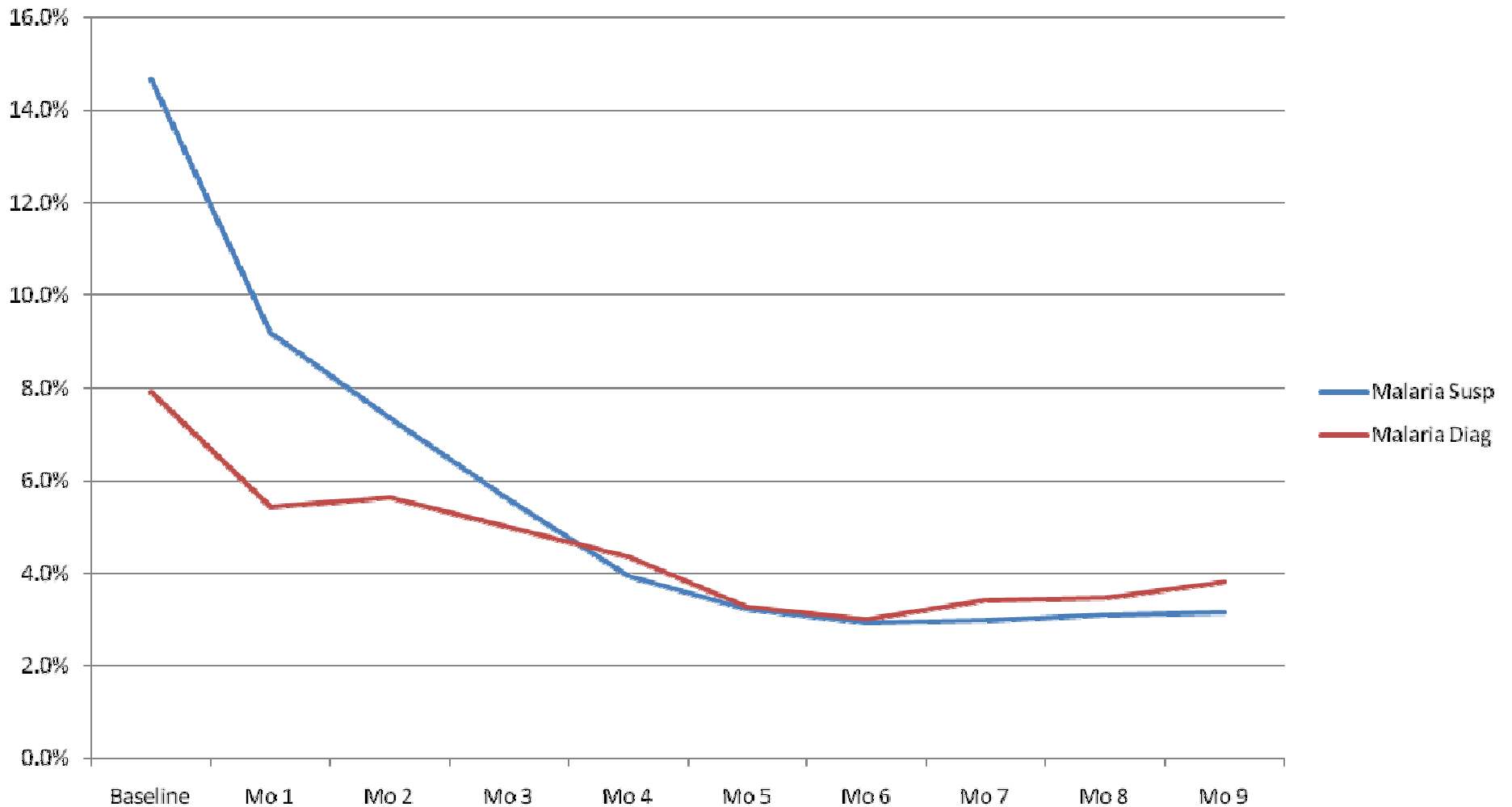
Percent using ORS



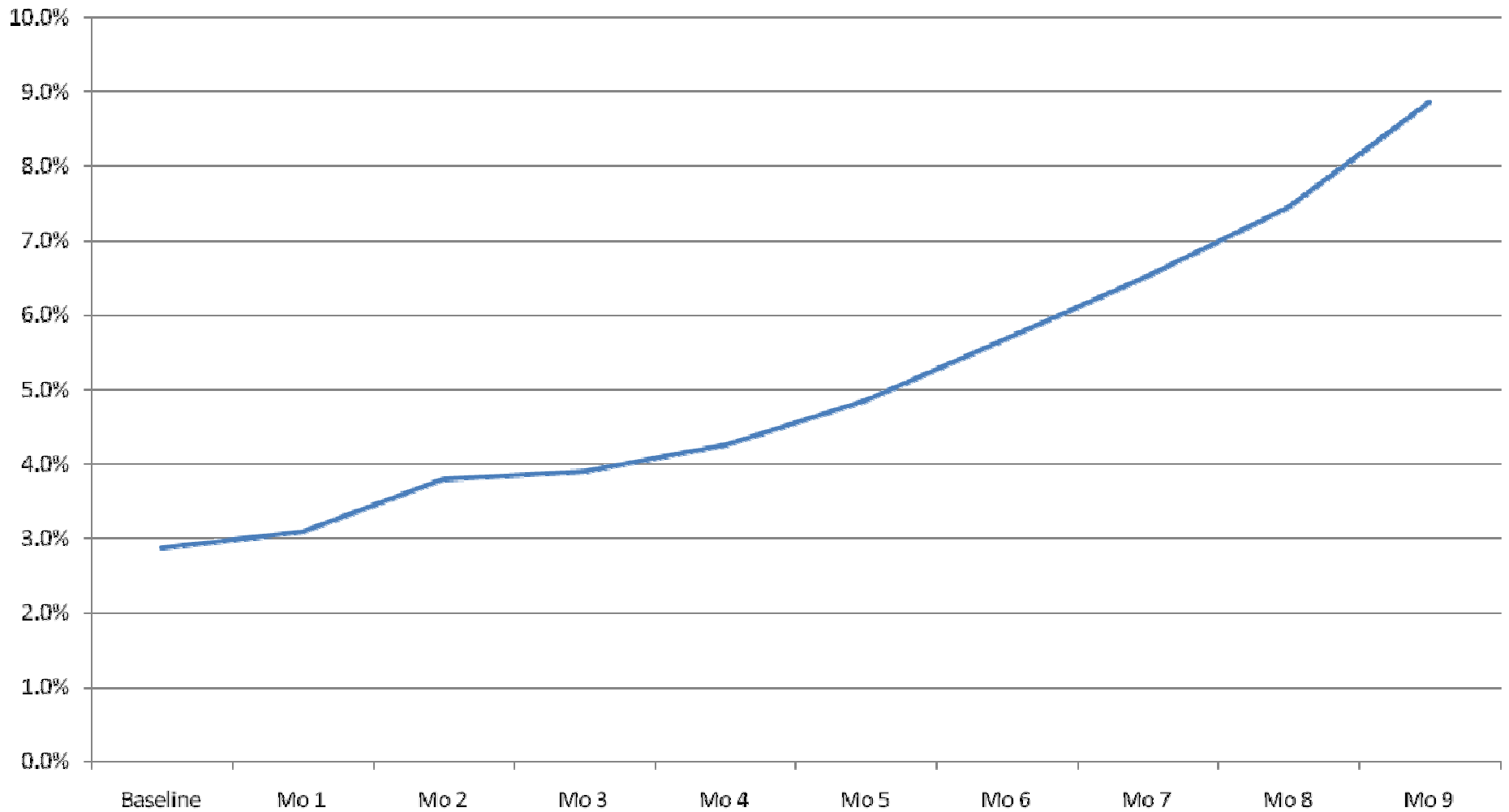
Diagnosed with Malaria



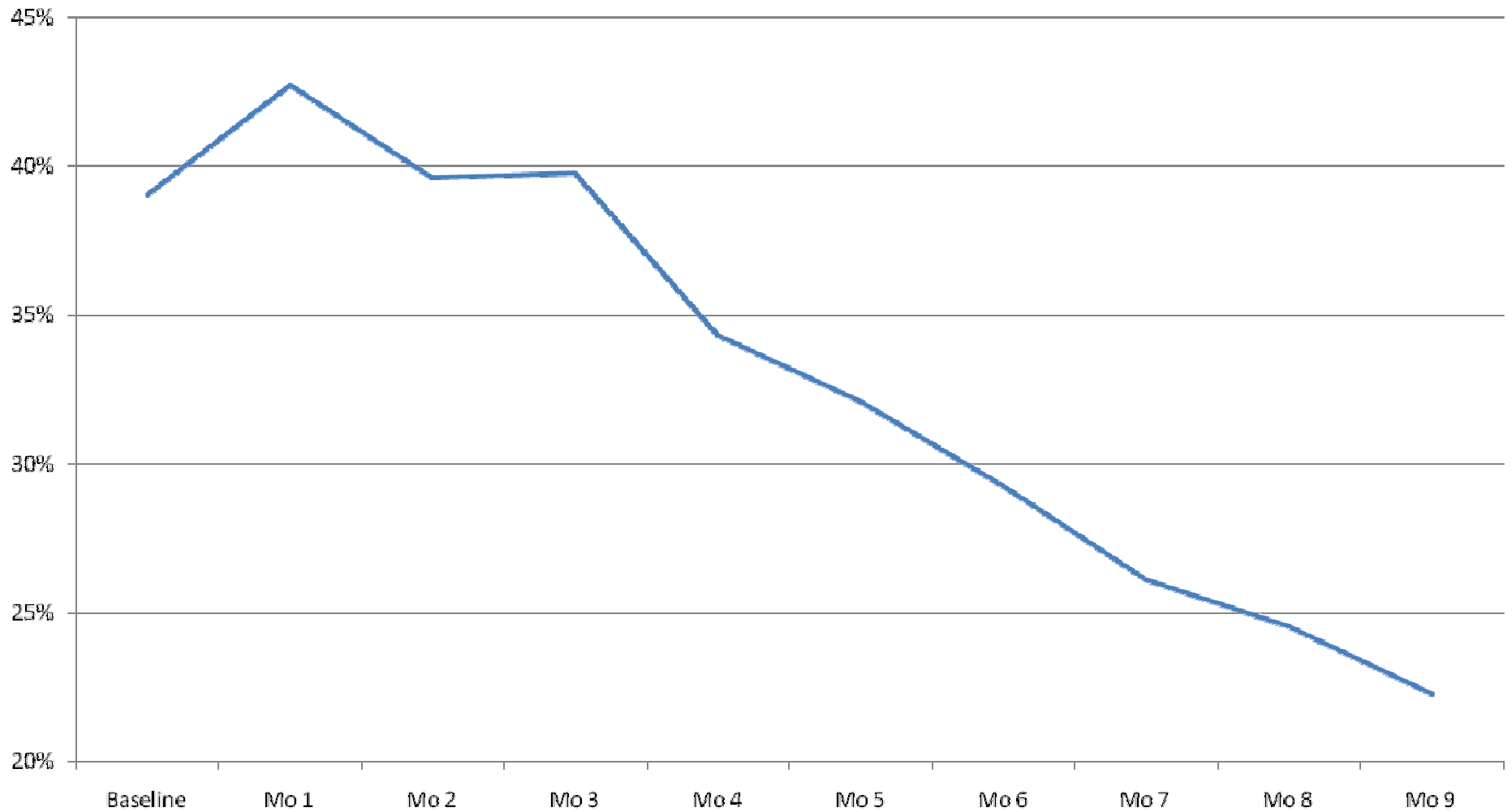
Malaria: Suspected vs. Diagnosed



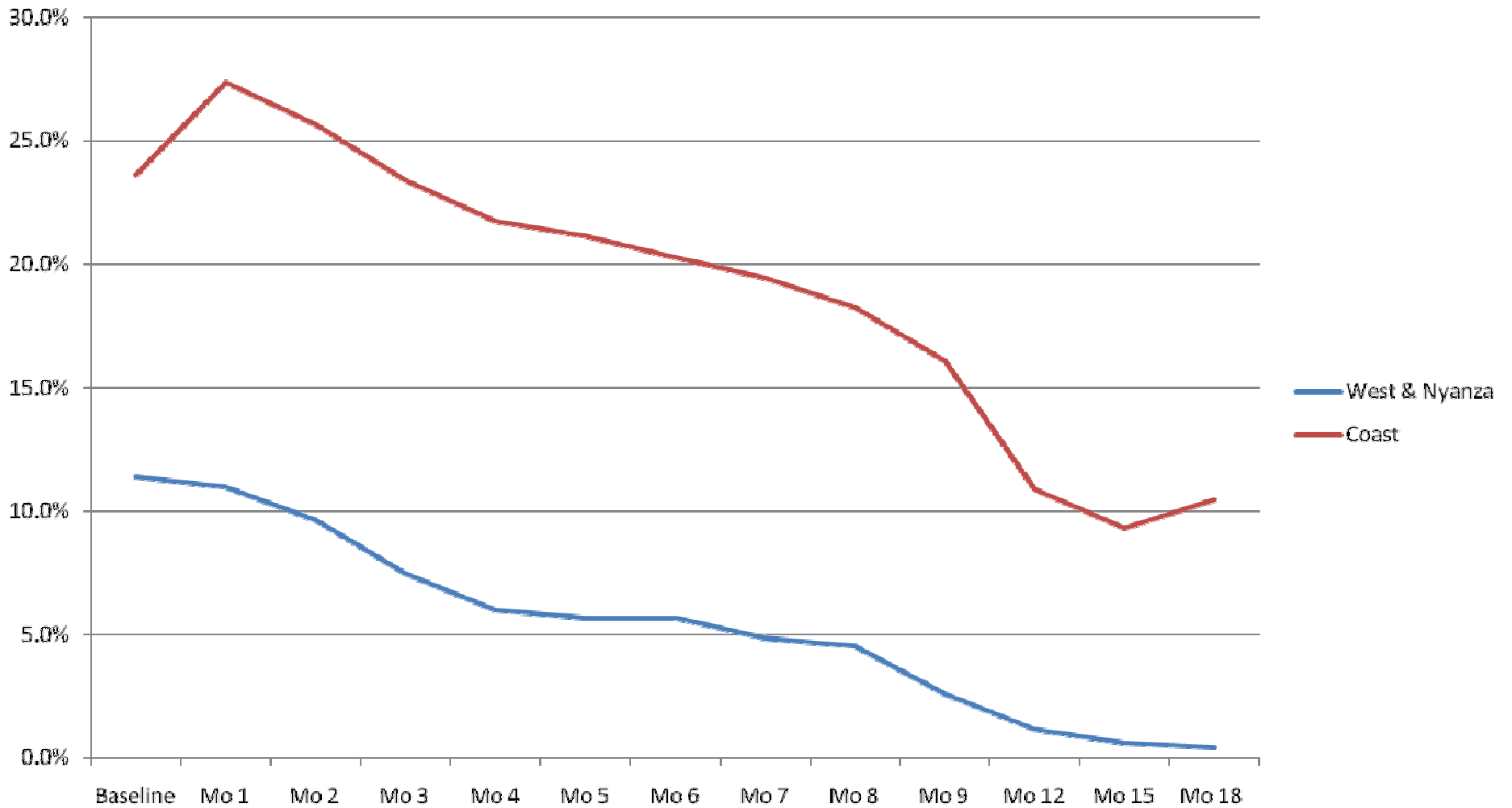
Tested for HIV



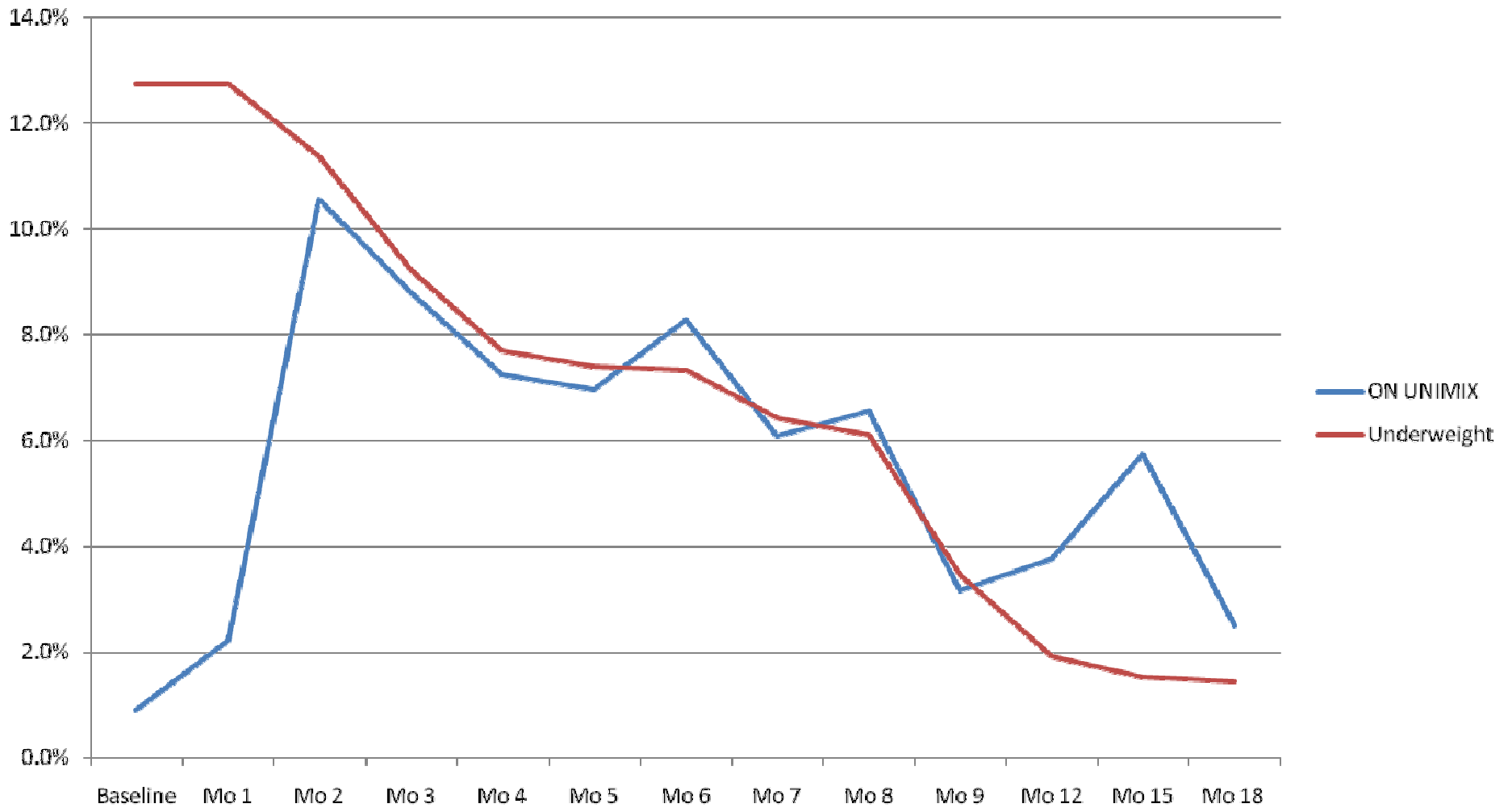
Percent HIV+ of those Tested



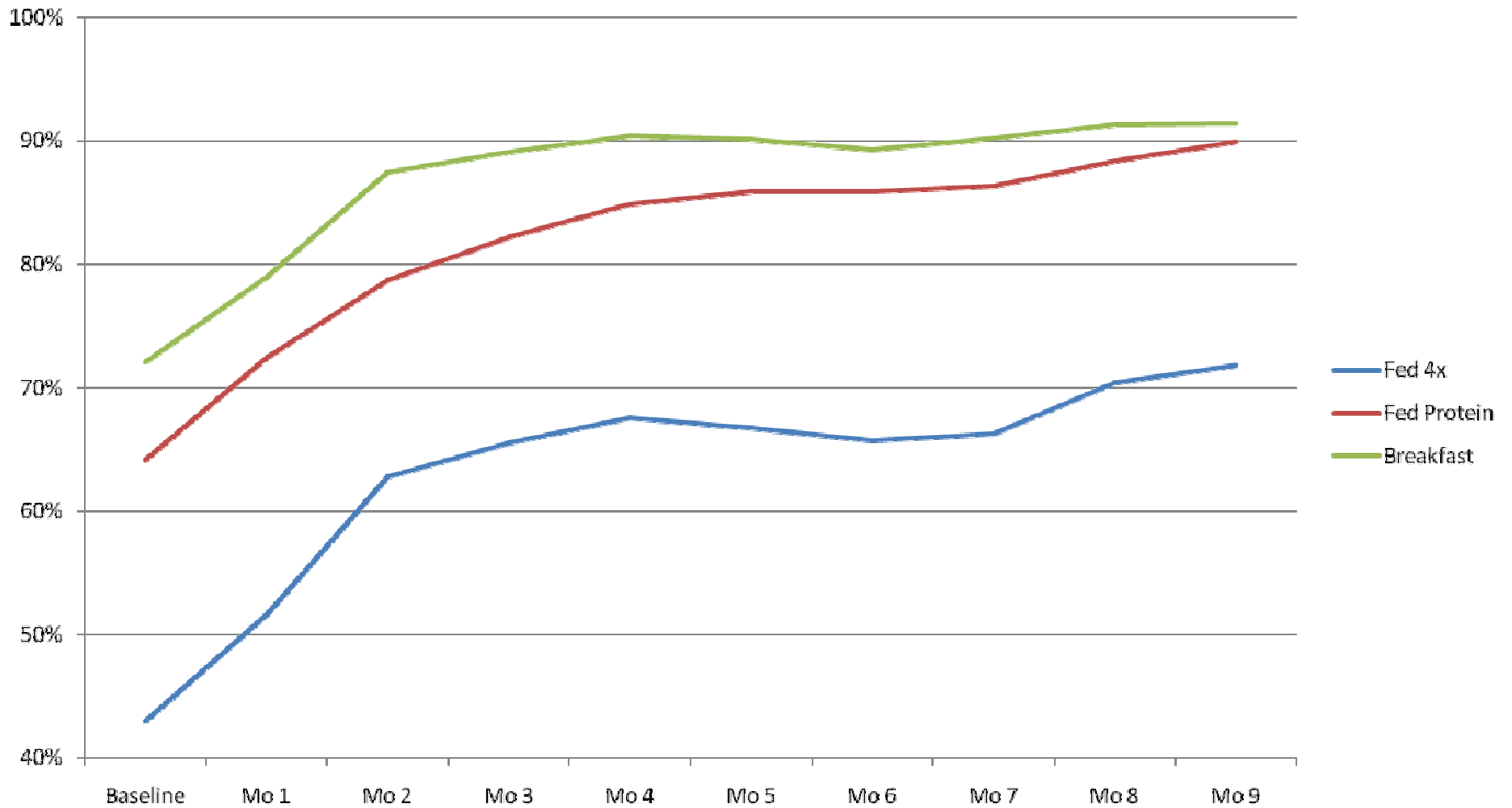
Underweight for Age



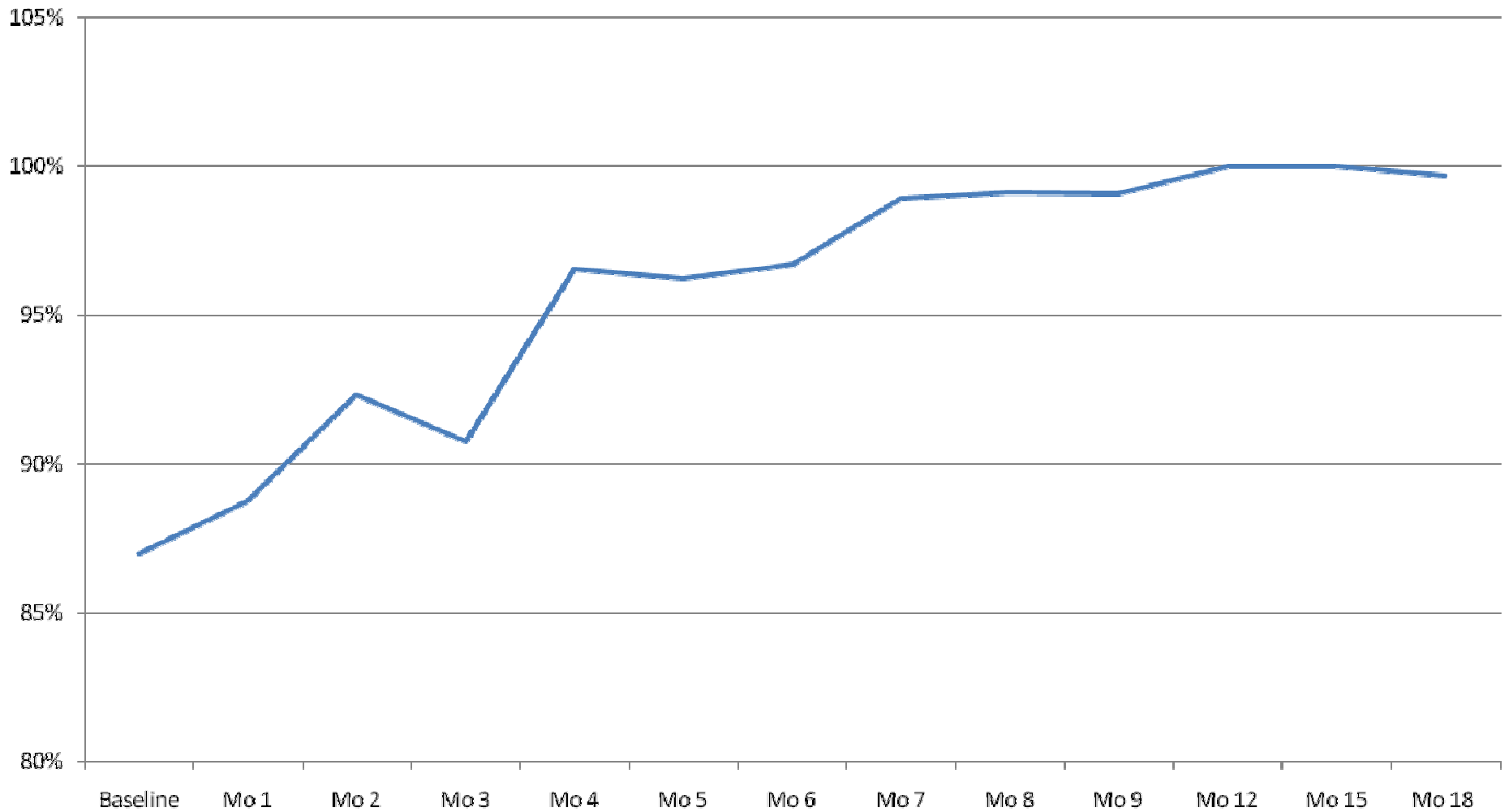
Underweight, On UNIMIX



HH Feeding Changes



Attends School 3x/week



Data Quality Assessment

- **Select CBOs, children, indicators**
- **Visit HHs**
 - Talk to caregivers and children
 - Check for availability and legibility of birth records and clinic cards
- **Assess “the system”:**
 - Does everyone understand the indicators?
 - Are the records there and matching?
 - Is the data being used?

Community Measurement enables Real Outcome Measurement

- Secondary indicators
- Community interpretations of indicators
- Time and frequency as
 - Budget necessity
 - Variables
 - Motivators

Contact info

Diane Lusk: dlusk@aed.org

Sarah Dastur: sdastur@aed.org