



TARGETING HOUSEHOLDS TO REACH VULNERABLE GROUPS

*LESSONS LEARNED FROM THE MALAWI SOCIAL CASH
TRANSFER PROGRAMME*

Ms Hyacinth Kulemeka

Director Child Development Affairs

**Ministry of Gender, Children and Community
Development**

Malawi

CCABA Symposium

Vienna, Austria

July 16th, 2010

PRESENTATION OUTLINE

- Current situation in Malawi
- Social Cash Transfer Programme – objectives and parameters
- Results of external evaluation of SCT
- Lessons learned
- Recommendations



SITUATION IN MALAWI

- Population of 13 million (2008 Census)
- Over half (6.8 million) are children
 - Over 1 million orphans and vulnerable children
- Adult HIV prevalence 12%
- 40% live under the poverty line
- 15% live under the ultra poverty line



SOCIAL CASH TRANSFER PROGRAMME

- Began in 2006 as an HIV impact mitigation programme for OVC
- Primary objective at start was to strengthen capacity of households to care and support orphans
- Objectives have since been expanded:
 1. To reduce poverty, hunger and starvation in all households living in the programme areas who are ultra poor and at the same time labour constrained
 2. To increase school enrolment and attendance of children living in target households and invest in their health and nutrition status.



PARAMETERS OF THE SCT PROGRAMME

- Targets households who are ultra poor and at the same time labour constrained
- Typical beneficiary households include:
 - Child headed
 - Elderly headed caring for orphans
 - Households headed by chronically ill persons
 - Households with a high dependency ratio (single breadwinner looking after more than 3 dependents)
- Transfer amount varies by household size and number of school going children within the household
 - Average monthly amount is USD 14 per household
 - Annual overall cost → USD 200 per household



COVERAGE

- Currently reaching over 28,000 households with approx 106,000 individual beneficiaries
- Over 65% of beneficiaries are children
 - Of which over 50,000 are orphans
- It is estimated that approximately 70% of beneficiary households are affected by HIV/AIDS

- Inclusive targeting by household enables multiple vulnerable groups to be reached through one intervention
 - OVC
 - Gap generation households
 - Persons living with HIV and AIDS



IMPACT

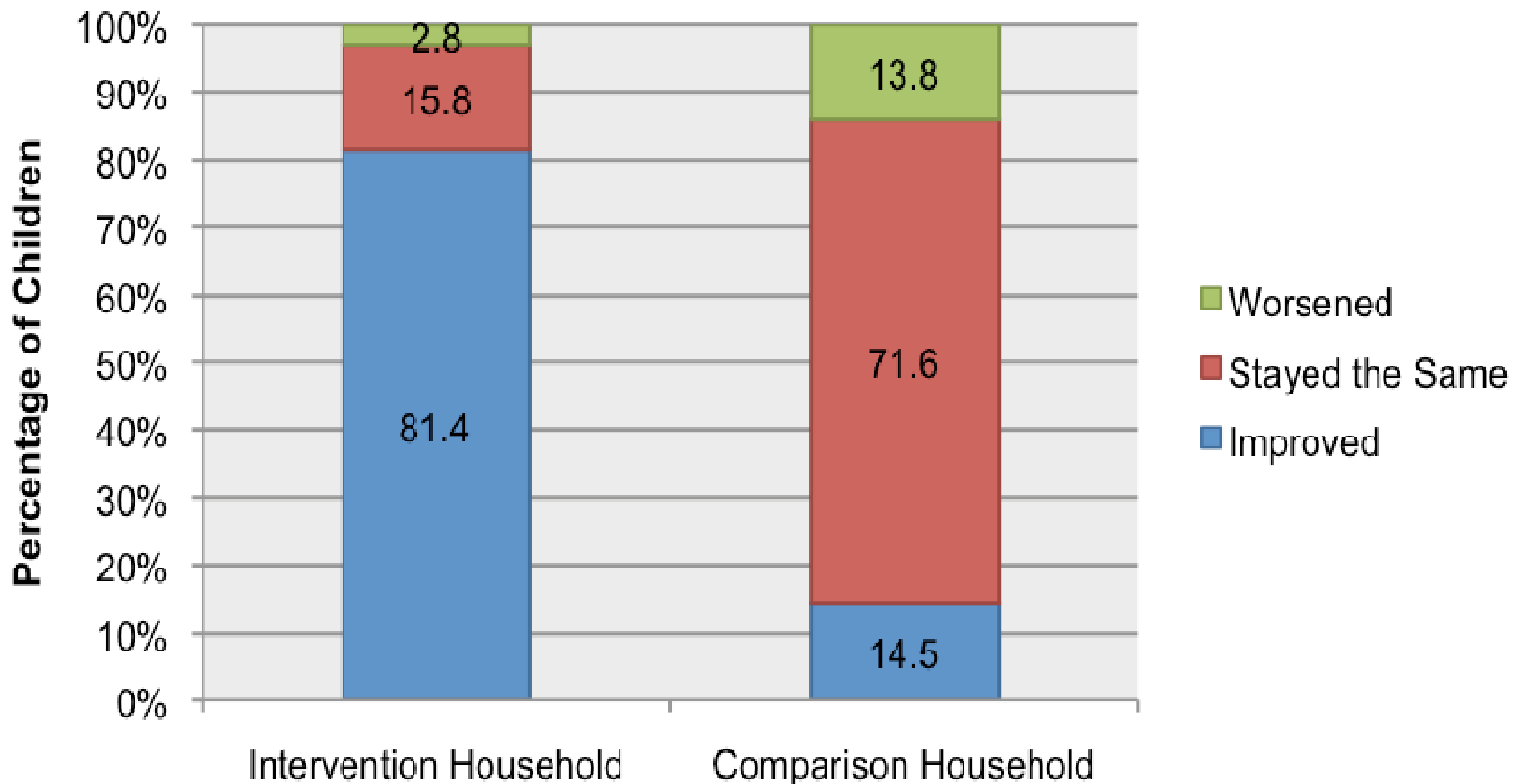
- External evaluation conducted in 2007/08 by Boston University and University of Malawi
- Found significant positive impact in the areas of:
 - Adult and child health seeking and status
 - Food security, consumption and diversification
 - Child education enrolment and retention
 - Increase in household productive assets
 - Decrease in child labour



IMPACT ON SELF-REPORTED CHILD HEALTH

Changes in Child Health Status

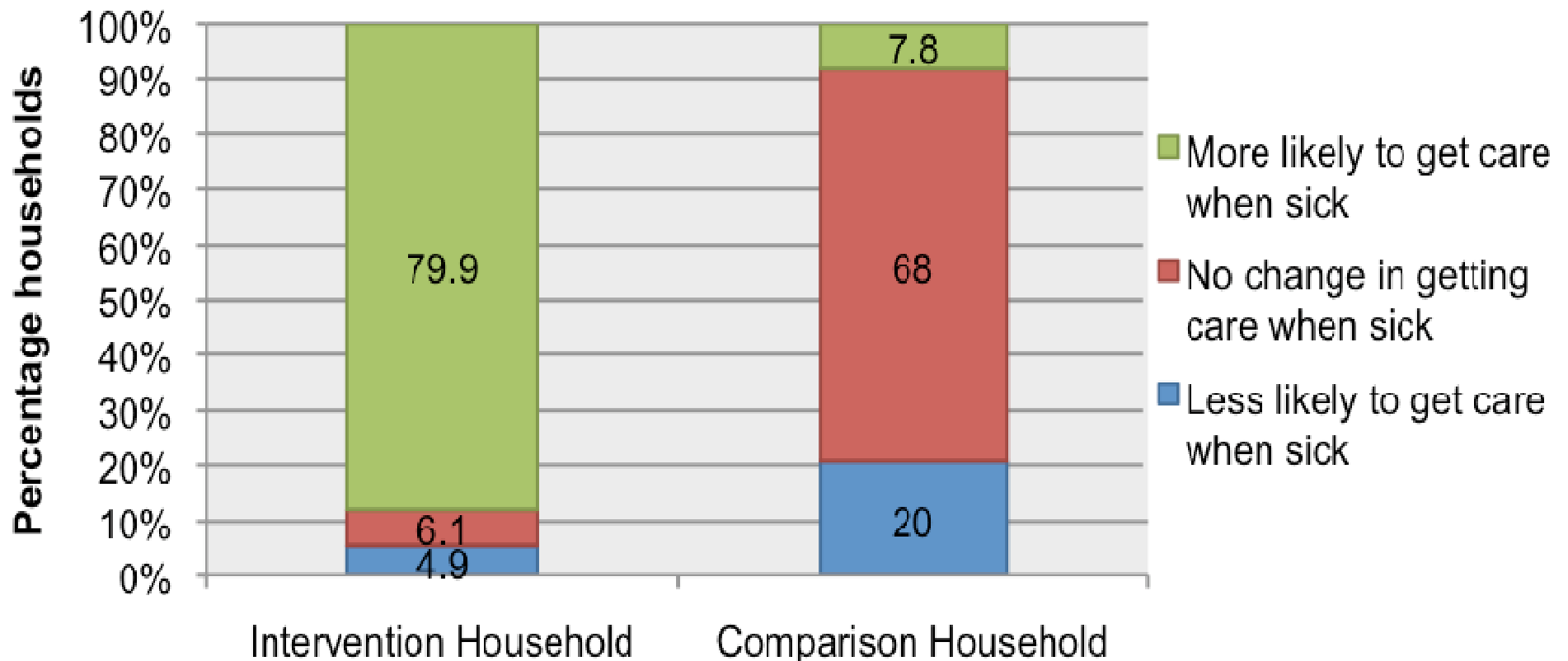
(reported by household head from March 2007 to March 2008)



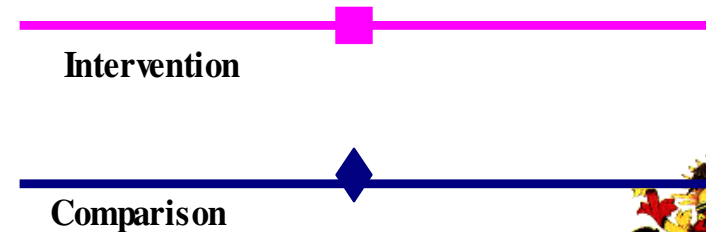
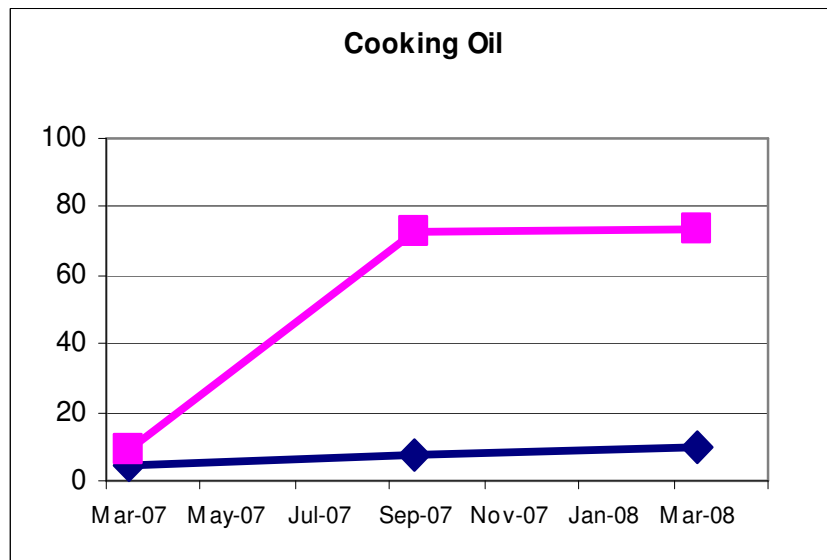
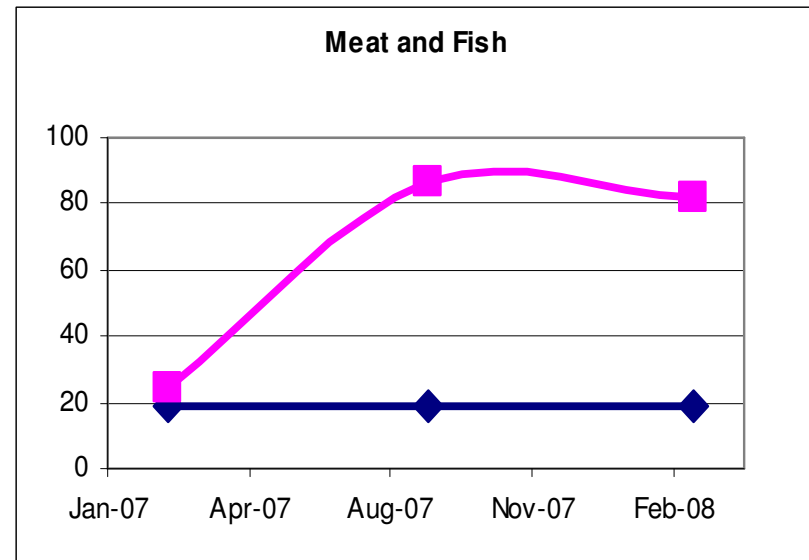
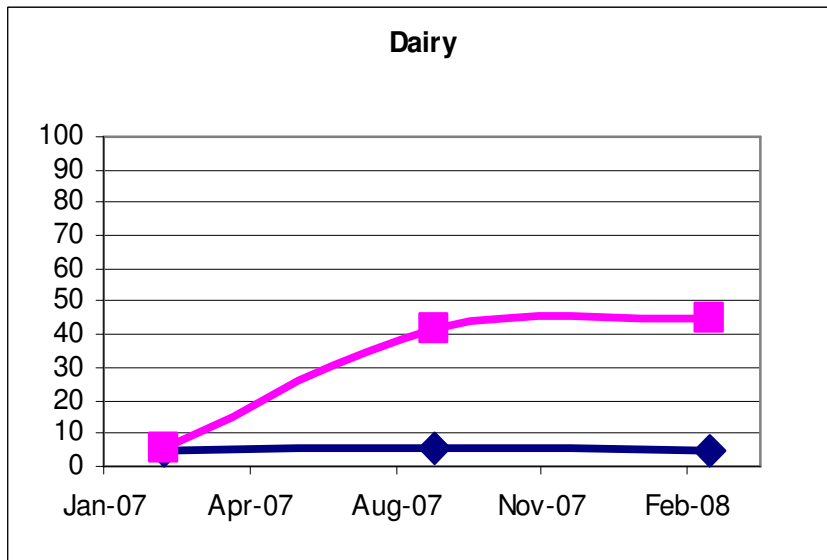
IMPACT ON HEALTH SEEKING BEHAVIOR

Changes in Seeking Healthcare for Children

(reported by household head from March 2007 to March 2008)

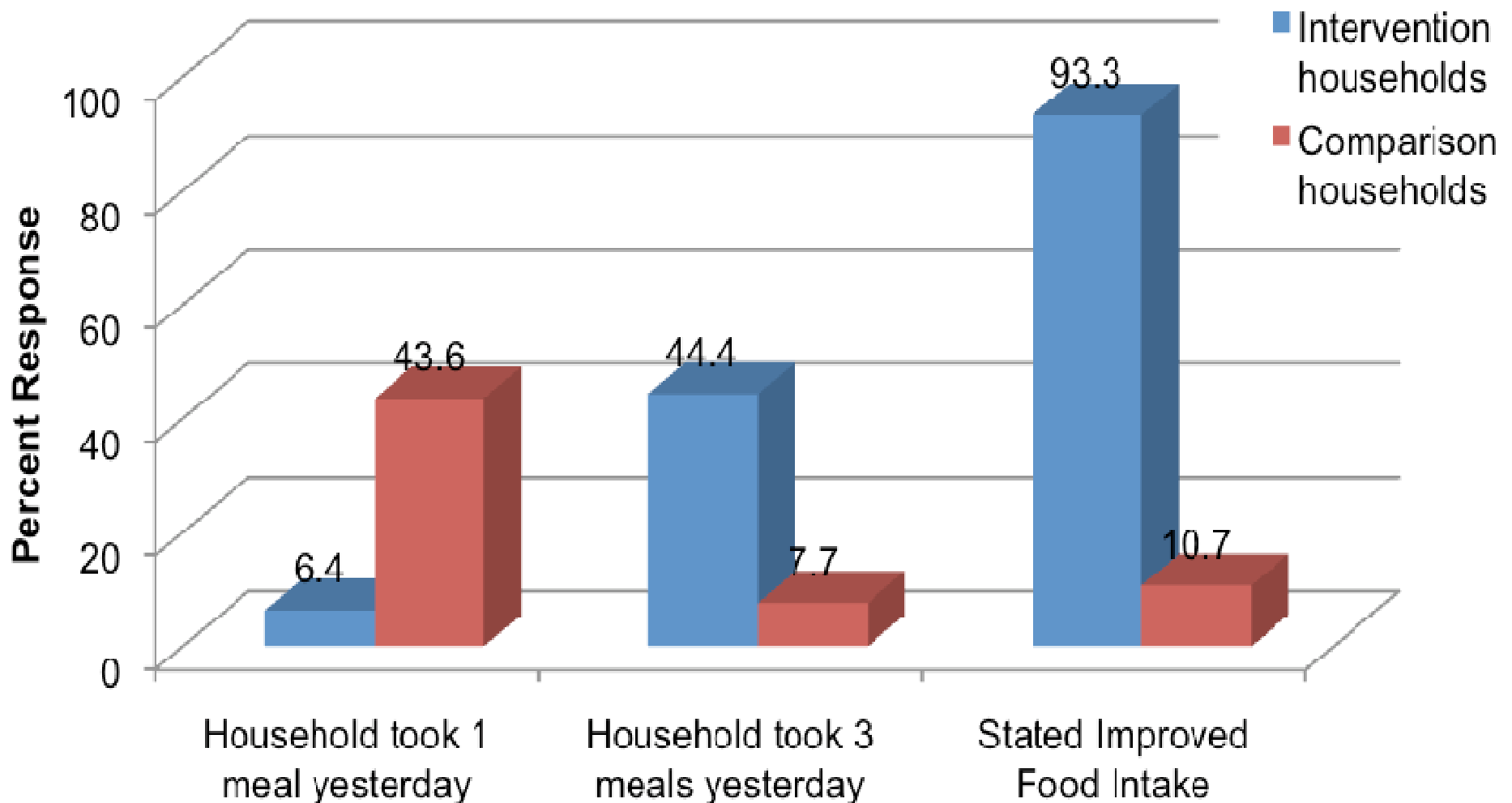


IMPACT ON HOUSEHOLD FOOD DIVERSITY



IMPACT ON HOUSEHOLD FOOD INTAKE

Adequacy of Food Consumption since March 2007



VOICES OF PLWHA

- *“We are able to eat good food. I buy meat at least once and fish twice every month. I am advised at the hospital to eat good food, which helps body building as I am on ARV treatment.” – PLWHA*
- *“With ... money I can now buy bathing soap for the children, the children have stopped doing casual work, I can buy school uniforms and I can now pay school fees. I now have enough food to last for a year. The children have mats to sleep on and blankets.”
– 38 year old female caring for 6 orphans*



LESSONS LEARNED

- Social Protection adds to the HIV response, extending impact beyond health into improving quality of life of both HIV infected and affected persons
- Inclusive targeting avoids stigmatisation and discrimination against both HIV *infected* and HIV *affected* persons
- Family support works to reach vulnerable people including children and can reach marginalized children in a relatively short amount of time
- Social protection is a key instrument to combat child poverty and measured impacts are cross cutting across all sectors



RECOMMENDATIONS

- Strong potential to mitigate the impact of HIV and AIDS exists through increased investment in Social Welfare
- While SCT has high impact on families, there is need for a stronger overall protective environment for children
- Stronger links must be built with other social service interventions including:
 - Psychosocial support
 - Home based care
 - Alternative care structures for orphans



FUTURE OF SP IN MALAWI

- Currently designing a National Social Protection Programme with the aim to address the needs of all vulnerable categories of the population
- Desire to scale up the SCT programme nationwide to reach approximately 300,000 households
- Better efforts made to link SCT with additional social services to provide a more comprehensive response to the needs of households affected by HIV/AIDS



THANK YOU!

for additional information:

email: hyacinth_kulemeka@yahoo.com

mobile: +265 888 386 906



Republic of Malawi